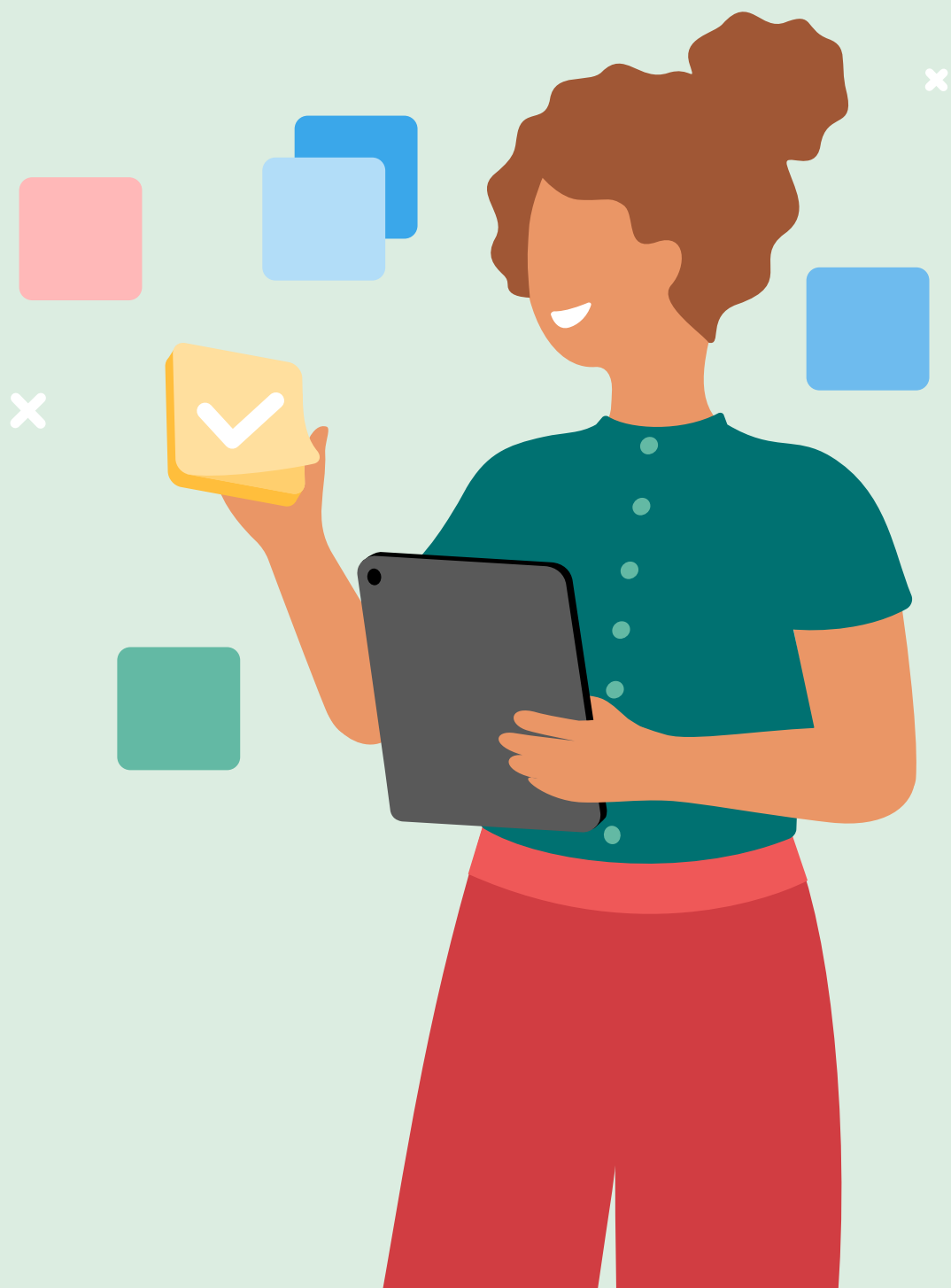




Sinch Contact Pro

Release schedule

October 2024



Release schedule

New releases of Sinch Contact Pro are done quarterly and updated to all tenants by Sinch according to the schedule below. New releases contain new and enhanced functionality and bug fixes.

Version upgrade is completed in two phases, Release to Test (RTT) and Release to Customer (RTC). In the RTT phase, the new release is installed into Sinch production landscape for both Sinch and customers' test tenants. The period between RTT and RTC is called field testing. After the field testing phase, the new release is installed into customers' production tenants.

Release	RTT	RTC
24Q4	September 17 2024	October 12 2024
25Q1	December 17 2024	January 11 2025
25Q2	March 18 2025	April 5 2025
25Q3	June 17 2025	August 9 2025